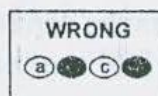
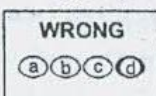
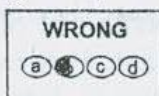
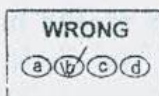
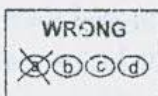
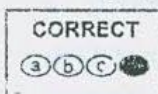


INSTRUCTIONS FOR MARKING CORRECT RESPONSE ON OMR RESPONSE SHEET

1. Use only Blue / Black Ball Point Pen to darken the appropriate oval.
2. Mark your response only at the appropriate space against the number corresponding to the question you are answering. Every question has four options.
3. Out of four options for each question, the candidate should mark the most appropriate response by completely darkening the corresponding oval on the OMR Response Sheet. Marking more than one response shall be treated as wrong response. There will be no negative marking for wrong response. No marks will be deducted for unattempted question.
4. Mark your response by completely darkening the relevant oval. The mark should be dark and the oval should be completely filled.
5. Given below are some of the wrong examples of marking responses.



6. Following is the correct method of marking responses.



7. Partly darkening the oval on the OMR response sheet or using other symbols such as tick mark or cross, would not result in evaluation of the response as the OMR scanner can only interpret the responses by reading the darkened responses in the manner explained in preceding paragraph. Darkening more than one oval as response to a question shall also be considered as wrong response.
8. The candidates shall be responsible to ensure that the responses are marked in correct manner and any adverse impact due to wrong marking of responses would be the responsibility of the respective candidate. Given in Point No. 5 above, are some of the examples of wrong marking of responses on OMR response sheet.
9. Make the marks only in the space provided. Please do not make any stray marks on the response sheet.
10. Use of Calculator, Mobile etc. is prohibited and use of these shall lead to disqualification.
11. Candidates are required to fill necessary information in columns No. 6 to 7 by darkening appropriate ovals. Given below is a correct illustration of how Roll No. 8119 and Question Booklet No. 7233 can be filled.

6. ROLL NUMBER			
8	1	1	9
①	●	●	①
②	②	②	②
③	③	③	③
④	④	④	④
⑤	⑤	⑤	⑤
⑥	⑥	⑥	⑥
⑦	⑦	⑦	⑦
●	⑧	⑧	⑧
⑨	⑨	⑨	●
⑩	⑩	⑩	⑩

7. Q. BOOKLET NO.			
7	2	3	3
①	①	①	①
②	●	②	②
③	③	●	●
④	④	④	④
⑤	⑤	⑤	⑤
⑥	⑥	⑥	⑥
●	⑦	⑦	⑦
⑧	⑧	⑧	⑧
⑨	⑨	⑨	⑨
⑩	⑩	⑩	⑩